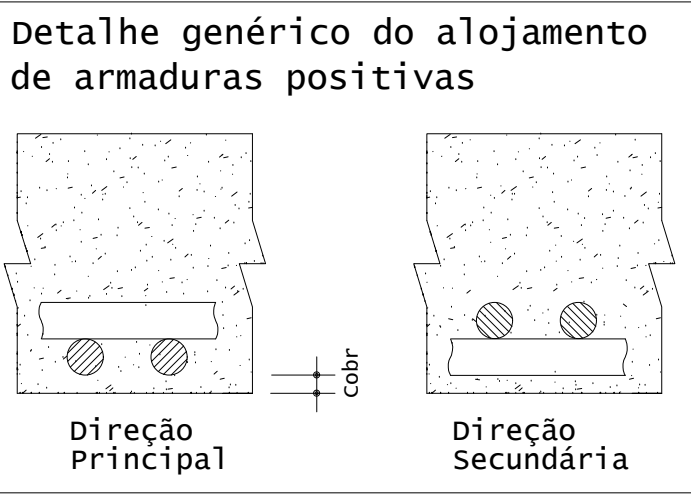
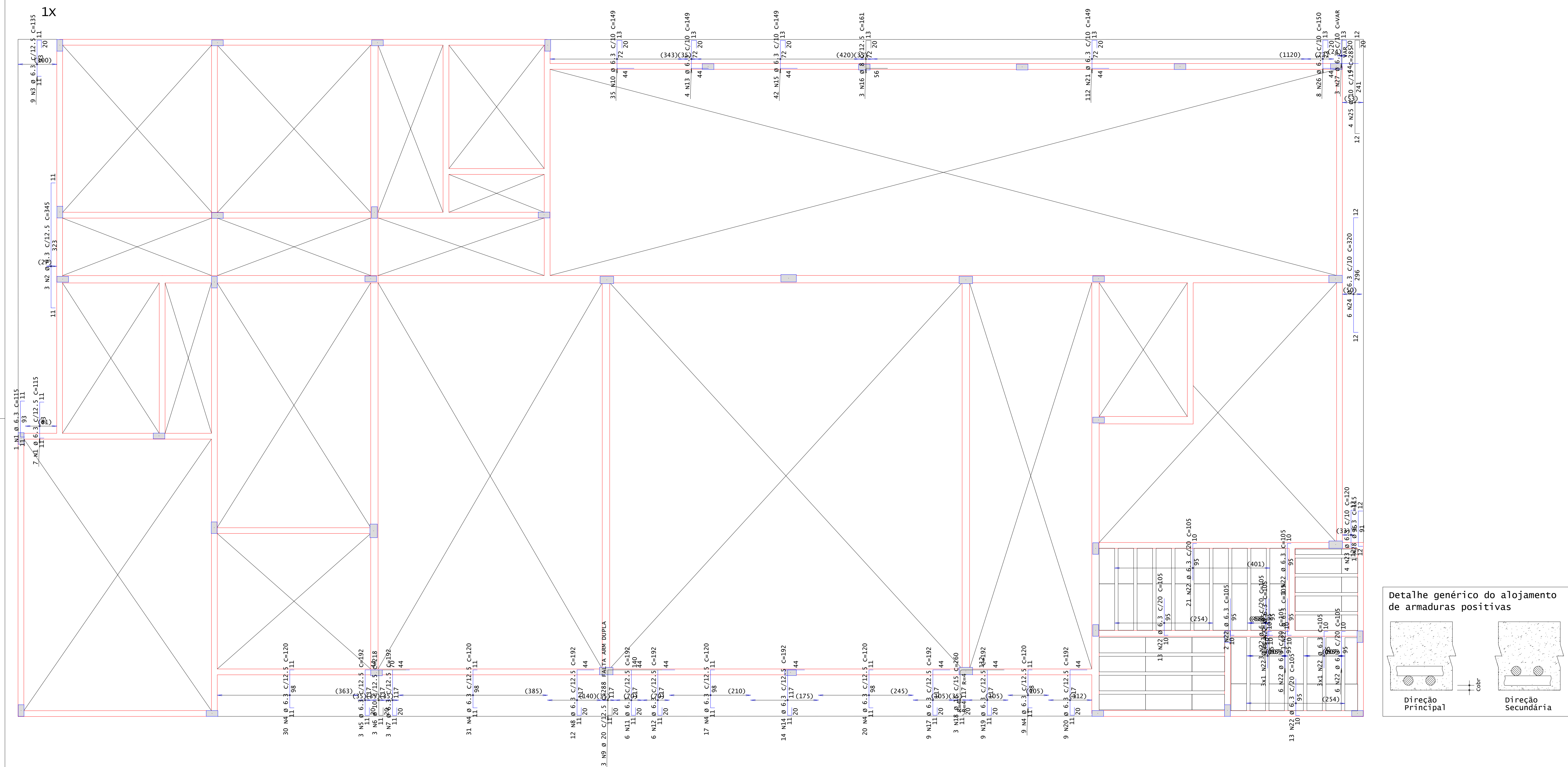
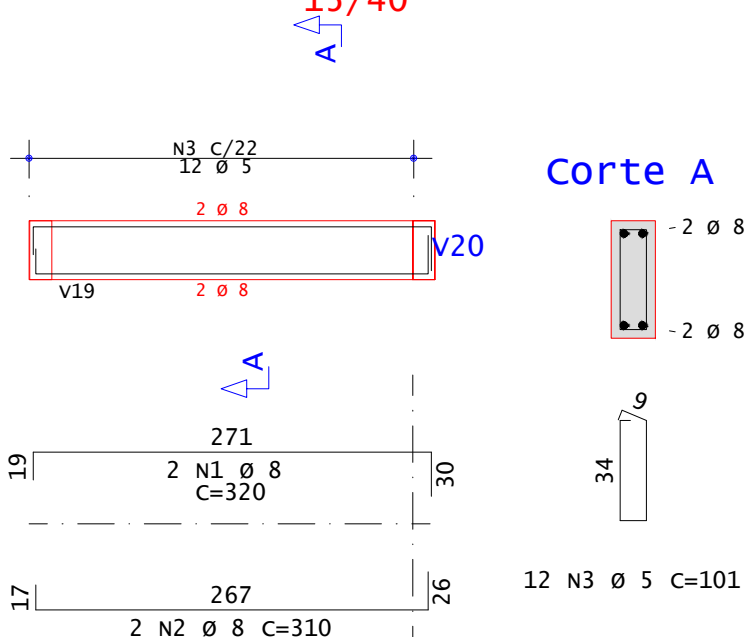


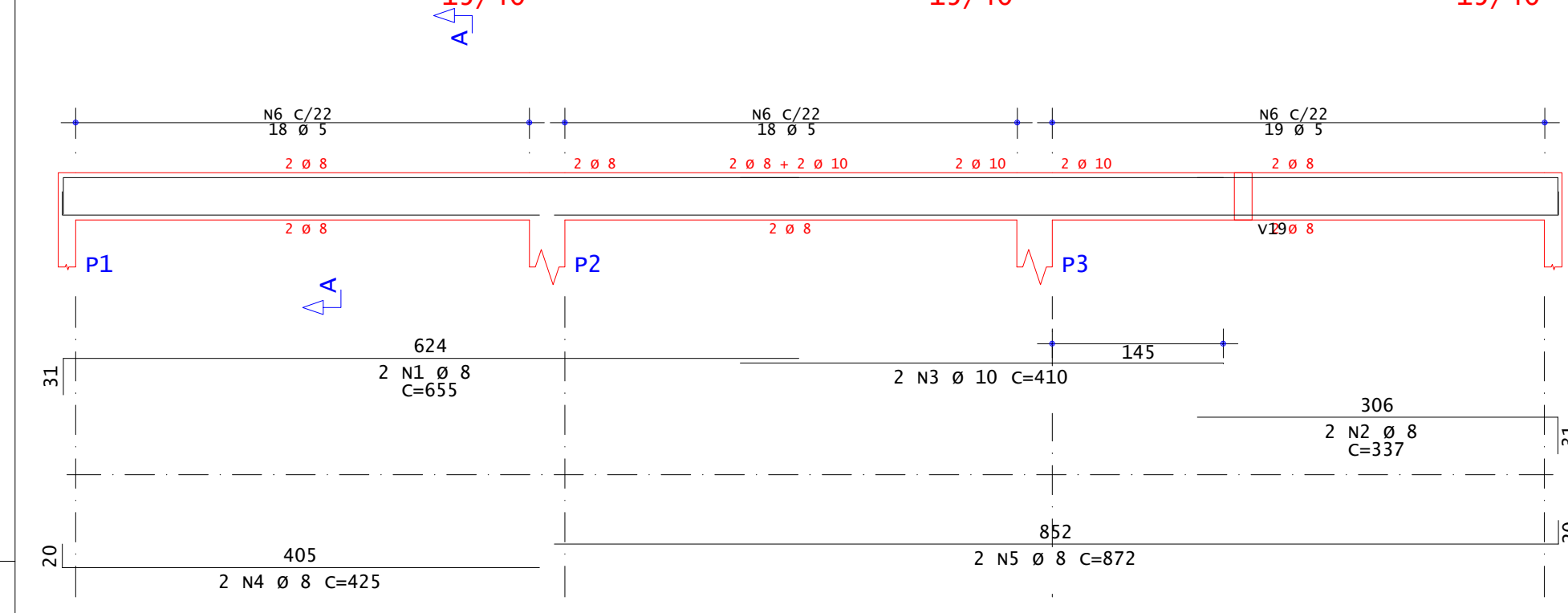
Cobertura 290 - Armadura negativa secundaria



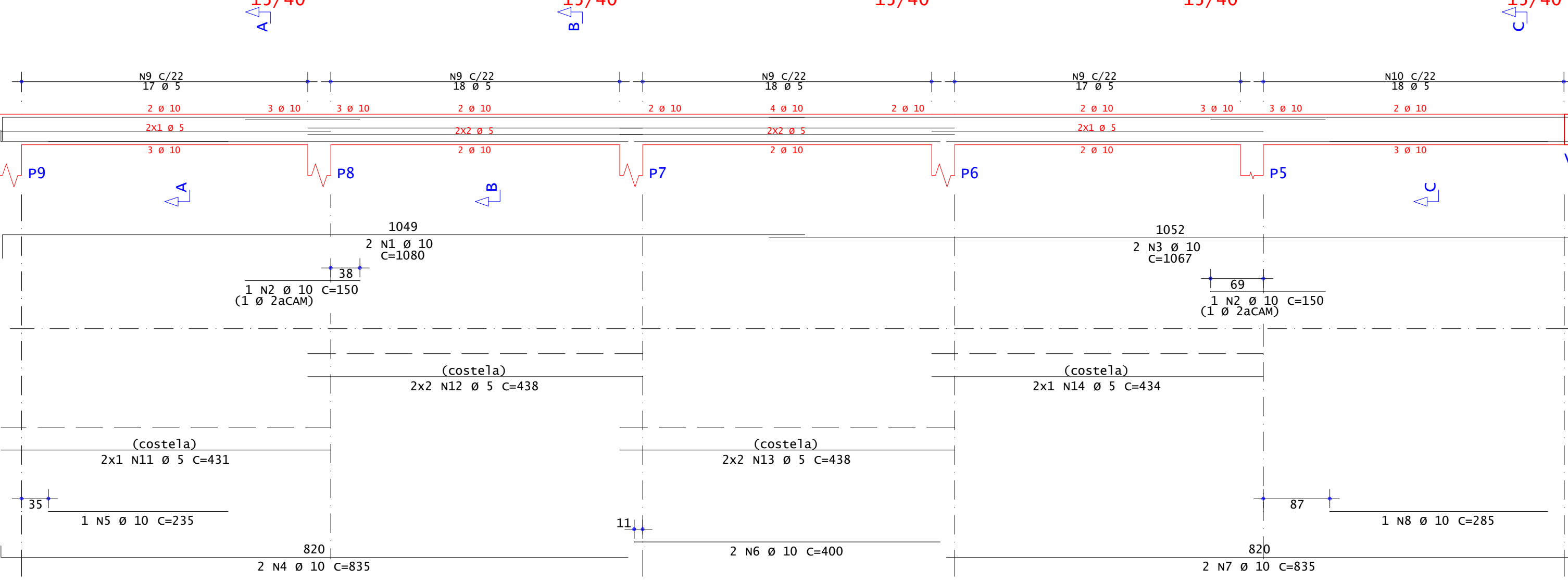
V3



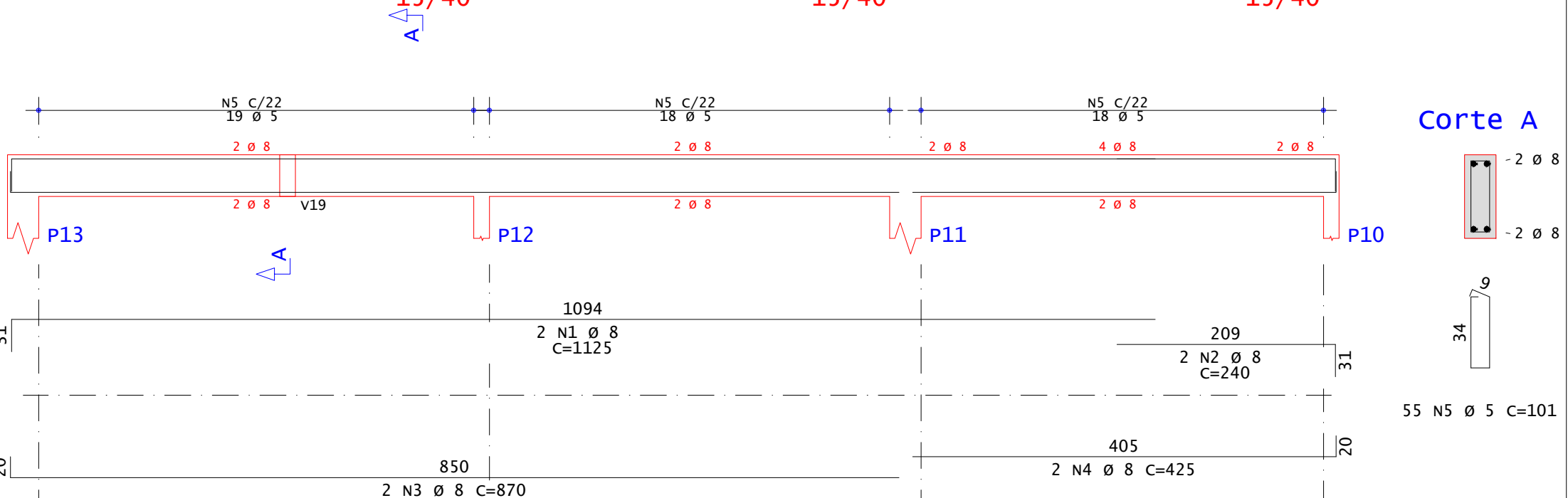
V1



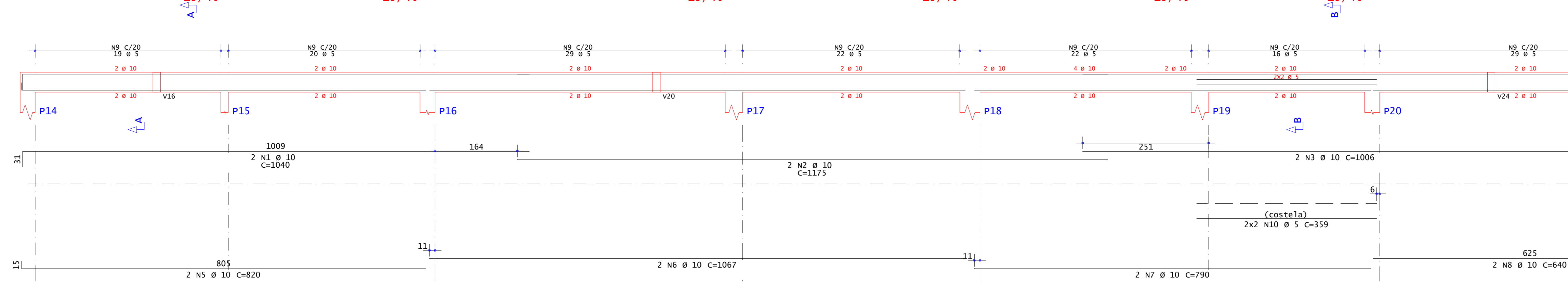
V2



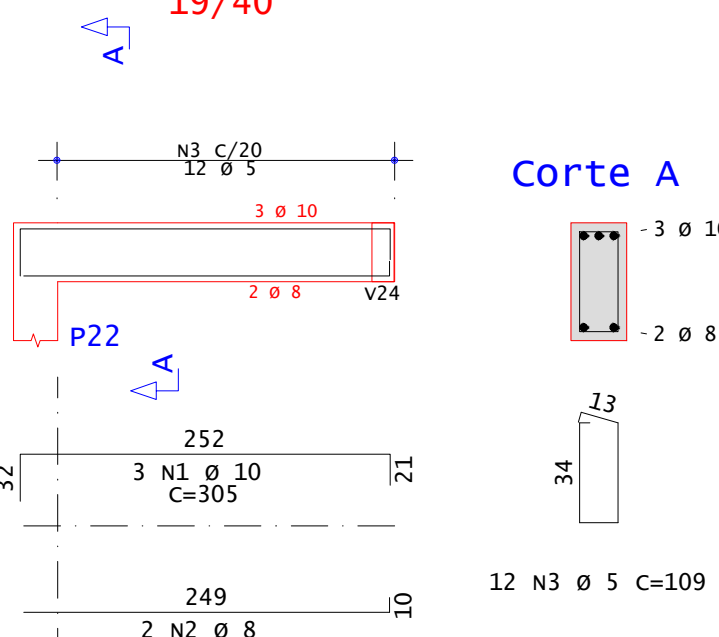
V4



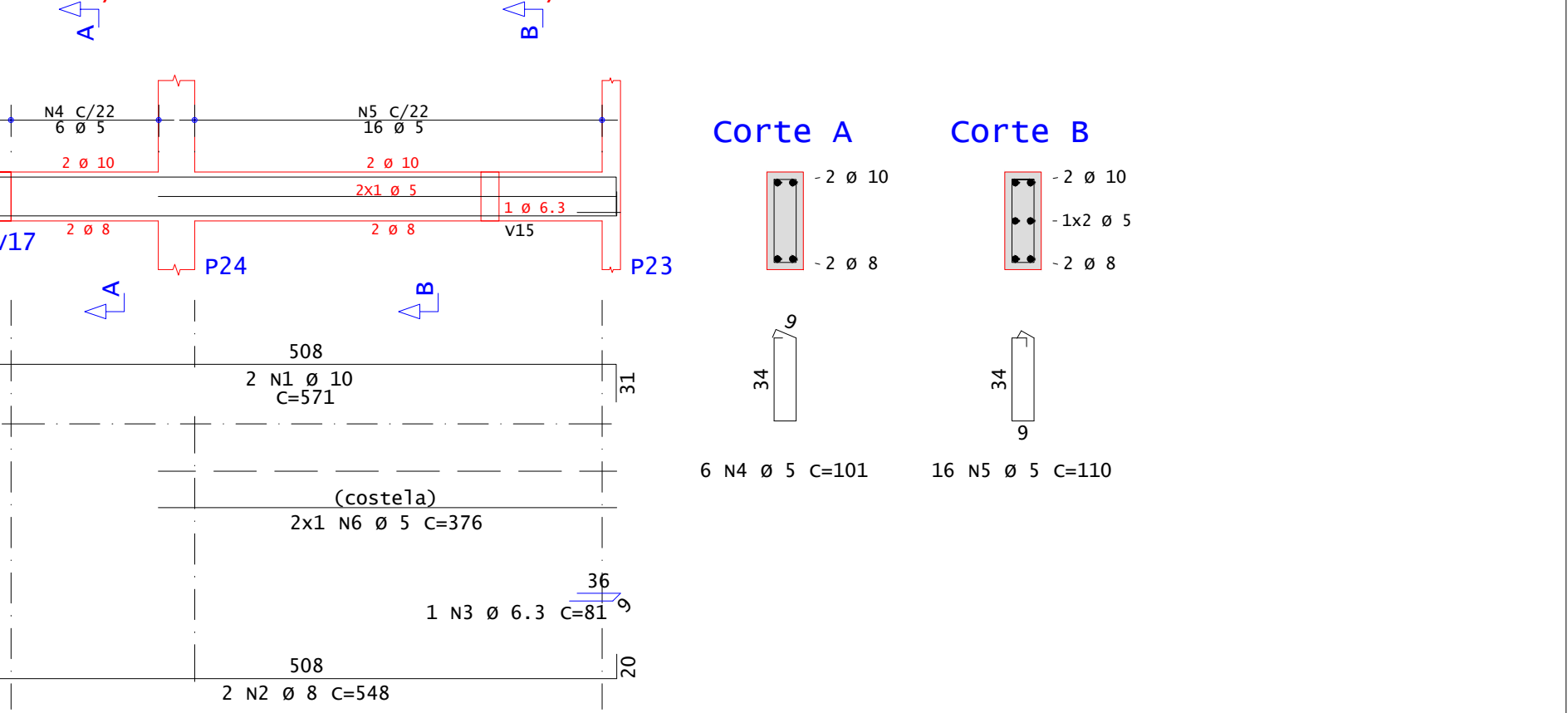
V5



V6



V7



ACO	POS	BIT	QUANT	COMPRIMENTO	UNIT	TOTAL
Cobertura 290 - Armadura negativa secundaria						
SOA	2	6.3	3	345	1035	
SOA	3	6.3	9	135	1215	
SOA	4	6.3	107	120	12840	
SOA	5	6.3	3	192	576	
SOA	6	6.3	3	188	564	
SOA	7	6.3	3	192	576	
SOA	8	6.3	12	188	2256	
SOA	9	20	3	288	864	
SOA	10	6.3	35	149	5215	
SOA	11	6.3	6	192	1152	
SOA	12	6.3	14	192	2688	
SOA	13	6.3	4	149	596	
SOA	14	6.3	1	14	14	
SOA	15	6.3	42	149	6258	
SOA	16	6.3	9	192	1728	
SOA	17	6.3	9	192	1728	
SOA	18	16	9	240	2160	
SOA	19	6.3	9	192	1728	
SOA	20	6.3	9	192	1728	
SOA	21	6.3	112	149	16688	
SOA	22	6.3	74	105	7770	
SOA	23	6.3	4	120	480	
SOA	24	6.3	6	320	1920	
SOA	25	10	4	185	740	
SOA	26	6.3	8	150	1200	
SOA	27	6.3	3	115	345	
SOA	28	6.3	1	115	115	
V1						
SOA	1	8	2	655	1310	
SOA	2	8	2	337	674	
SOA	3	10	2	410	820	
SOA	4	8	2	425	850	
SOA	5	5	55	101	5555	
V2						
SOA	1	10	2	1080	2160	
SOA	2	10	2	1175	2350	
SOA	3	10	2	1067	2134	
SOA	4	10	2	835	1670	
SOA	5	10	2	235	470	
SOA	6	10	2	400	800	
SOA	7	10	2	835	1670	
SOA	8	10	1	285	285	
SOA	9	5	70	110	7700	
SOA	10	5	18	101	1818	
SOA	11	2	432	852	3652	
SOA	12	5	4	438	1752	
SOA	13	5	4	438	1752	
SOA	14	5	2	434	868	
V3						
SOA	1	8	2	320	640	
SOA	2	8	2	310	620	
SOA	3	5	12	101	1212	
V4						
SOA	1	8	2	1125	2250	
SOA	2	8	2	240	480	
SOA	3	8	2	870	1740	
SOA	4	8	2	425	850	
SOA	5	5	55	101	5555	
V5						
SOA	1	10	2	1040	2080	
SOA	2	10	2	1175	2350	
SOA	3	10	2	1006	2012	
SOA	4	10	2	500	1000	
SOA	5	10	2	820	1640	
SOA	6	10	2	1067	2134	
SOA	7	10	2	790	1580	
SOA	8	10	1	285	285	
SOA	9	5	157	109	17113	
SOA	10	5	4	359	1436	
V6						
SOA	1	10	3	305	915	
SOA	2	8	2	259	518	
SOA	3	5	12	109	1308	
V7						
SOA	1	10	2	571	1142	
SOA	2	8	2	548	1096	
SOA	3	6.3	1	81	81	
SOA	4	5	6	101	606	
SOA	5	5	16	110	1760	
SOA	6	5	2	376	752	

RESUMO DE AÇO			
ACO	BIT	COMPR	PESO
			kgf
60A	5	500	77
SOA	6.3	705	171
SOA	8	133	52
SOA	10	275	270
SOA	16	8	12
SOA	20	9	21
Peso Total	60A =		77 kgf
Peso Total	SOA =		428 kgf

TISCOSKI  
ARQUITETURA E ENGENHARIA

PROJETO ESTRUTURAL

CÂMARA MUNICIPAL DE MORRO DA FUMAÇA  
RUA EMILIO FRASSON, 130, BARRIO MONTE VERDE, MORRO DA FUMAÇA/SC

CONTEÚDO  
-FRANCA COBERTURA (NÍVEL 2.90)  
-DETALHAMENTOS

FRANQUIA  
10/15

PROPRIETÁRIO:  
MUNICÍPIO DE MORRO DA FUMAÇA  
CNPJ: 83.000.323/0001-02

RESPONSÁVEL TÉCNICO:  
HJ ARQUITETURA E ENGENHARIA LTDA  
CREA-SC 187117-2  
JULIANA TISCOSKI - CREA-SC 123317-7

ESCALA  
INDICADA

DESENHO  
AMANDA

ÁREA TOTAL  
554,55m²

DATA  
AGOSTO/2025